

**JACK**

China No.1

# C6 Automatic thickness adaptation computerized overlock machine.

Original servo-driven, the light (A), medium(M) and heavy duty (H) , three-model adjustment, Briskly operating and light voice, Efficient production rate.

- ▶ Operating more briskly,light voice,comfortable and more efficient.
- Between the presser foot lifter with the tooth has large space for place fabric,Easy to place the sewing material , without scratching the fabric.
- ▶ Electronic digital control, precise and convenient.

the new generation of computerized overlock machine



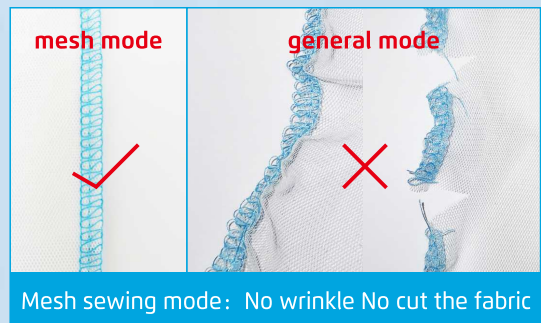
# Riginal servo-driven ,the light (A), medium(M) and heavy duty (H) , three-model adjustmen , Briskly operating and light voice , Efficient production rate.

“make you the“Manual+Automatic“sewing experience in the sewing industry”

Sewing Mode	Suitable sewing range	Advantage
Auto	Automatically adapt to match the thickness of the fabric and switch to the corresponding mode	Solve the quick return of small order, and issue of frequent switching between thickness and thinness. Worry-free switching between thickness
A (light)	Suitable for sewing thin fabrics, Mesh materials, such as single-layer knitting, Mesh, etc.	The stitches are smooth without wrinkles
M (medium)	Suitable for sewing conventional medium and heavy materials, such as T-shirts, woven materials, etc.	Wide sewing range
H (Heavy duty)	Suitable for sewing heavy duty materials, such as jeans, thick sweaters, etc.	Strong power and high efficiency



AUTO switch of three model of fabrics



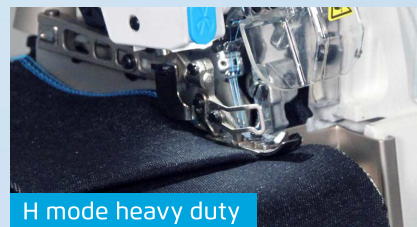
Mesh sewing mode: No wrinkle No cut the fabric



A Mode light



M Mode medium



H mode heavy duty



# C6 Automatic thickness adaptation computerized overlock machine. mode selection

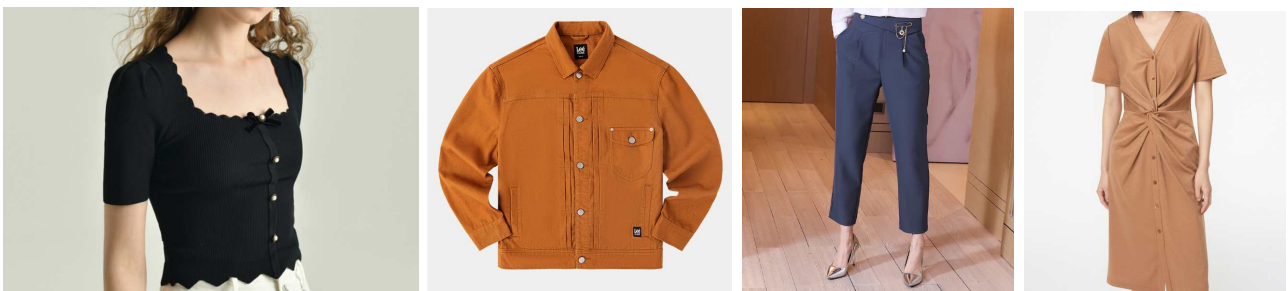
**Auto (Automatic adaptation):** Automatically adapt to match the thickness of the fabric, Automatically adapt to switch to corresponding mode。 solve the quick return of small order, and issue of frequent switching between thickness and thinness, Worry-free switching between thickness, Suitable for sewing a variety of clothing in spring, summer, autumn and winter, Tully change the type with one machine.



**A (light):** Suitable for sewing thin fabrics and mesh materials, with smooth stitches and no wrinkles. Reference clothing: underwear, mesh base, chiffon skirt, UV protection clothing, etc.



**M (Medium):** It is suitable to sewing most conventional medium and thick materials and has a wide range of sewing. Reference clothing: T-shirts, jackets, knitted jumpsuits, trousers, etc.

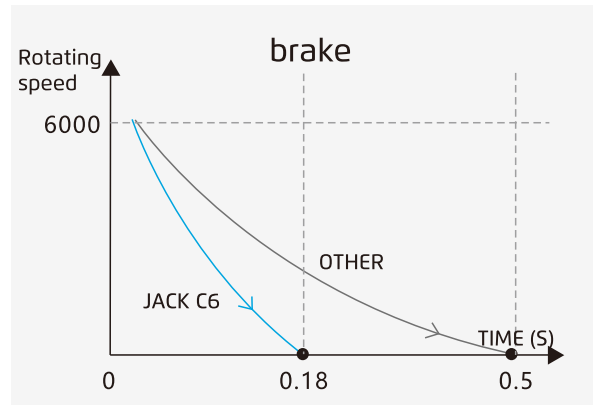
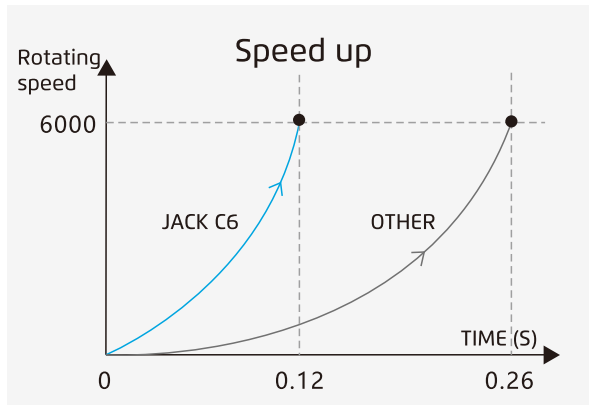


**H (heavy duty):** Suitable for sewing thick materials, smoothly feeding the difference of thickness, and strong cross sewing ability. Reference clothing: denim, thick sweater, woolen clothes, etc.



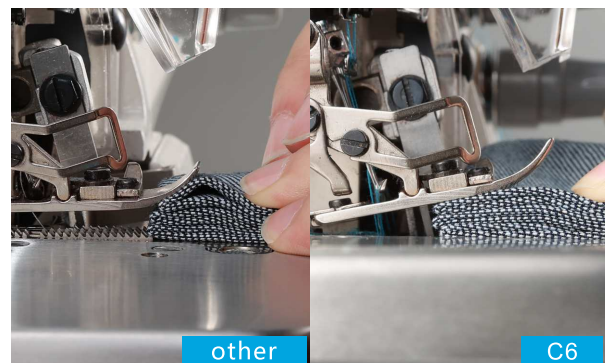
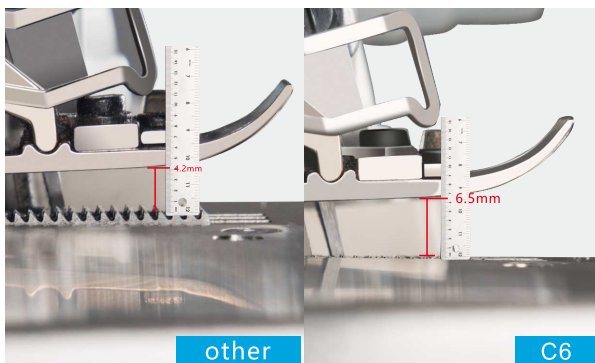
## 1 Operating more briskly, light voice, comfortable and more efficient

- Quick start and stop, strong power, 35% increase in efficiency
- Start-stop response increased by 14.3%: acceleration 0~6000 rpm, 120ms; braking 6000 rpm~0, 180ms
- The sound of empty sewing, thread trimming, and presser foot lifting is low



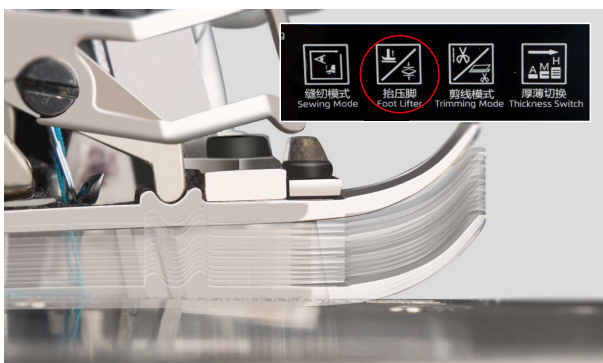
## 2 Feeding space is large, easy sewing and not scraping material

Feeding space increased by 54% (4.2mm to 6.5mm). After the presser foot lifted by servo drive, the feed dog will drop down. 8-12 layers of denim are placed in the seam, the sewing is smooth without scraping, and the feed dog is automatically reset during normal sewing.



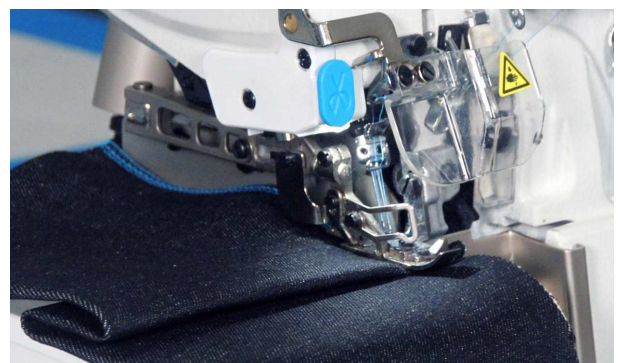
## 3 Electronic digital control, precise and convenient

One-button adjust the presser foot lifter/feed dog height, simple operation, no tools required. The digital display is more accurate and the presser foot force is guaranteed.



## 4 Intelligent recognition of thick materials when sewing makes sewing smoother

Intelligent recognition when sewing thick materials, automatic detection of thickness, automatic reduction of speed and force, making the cross sewing force stronger and sewing smoother.



# C6+ <sup>+</sup> Let us help you connect to the future of smart sewing

1. Online equipment, data on the cloud, APP applications on the cloud and large screen display to help you build a digital factory.
2. Through real time data analysis, resource allocation is optimized, production efficiency is improved, and delivery cycle is shortened.
3. Seamlessly Connecting with third party applications, enabling the factory to deeply empower production management, equipment management, quality management, etc.



苹果系统【Apple】



安卓系统【Android】

# Specification

Model	Functions	Needle	Needle NO.	Thread NO.	Needle Distance (mm)	Stitch Width (mm)	Stitch Length (mm)	Differential Ratio	Presser Foot Lifting Height (mm)	Max. speed (S.p.m)	Volume (mm)	Weight (kg)
C6-02×250	Pocket binding seam	DC×27 14#	2	4	5	5	0.8-4.2	0.7-2	3.5	7000	525*360*510	33/41
C6-3-02/233	Plain seam	DC×27 11#	1	3	/	4	0.8-4.2	0.7-2	5	7000	525*360*510	33/41
C6-3-32R2/223	Narrow stitch seam	DC×27 9#	1	3	/	1.5	0.8-4.2	0.7-2	5	7000	525*360*510	33/41
C6WF-3-02/213	No-woven	DC×27 14#	1	3	/	4	0.8-8.5	0.7-2	5	7000	525*360*510	33/41
C6-4-M03/333	Plain seam	DC×27 11#	2	4	2	2×4	0.8-4.6	0.7-2	6	7000	525*360*510	33/41
C6-4-M03/333/H/M	Heavy duty	DC×27 11#	2	4	2	2×4	0.8-4.6	0.7-2	6	7000	525*360*510	33/41
C6-4-M03/333/K	knitting fabric	DC×27 11#	2	4	2	2×4	0.8-3.8	0.7-2	6	7000	525*360*510	33/41
C6MJ-4-53/233	Tower ending	DC×27 11#	2	4	2	2×4	0.8-4.2	0.7-2	5	7000	525*360*510	33/41
C6-5-53/233	Strip attach seam	DC×27 14#	2	5	3	3×5	0.8-4.2	0.7-2	5	7000	525*360*510	33/41
C6-5-03/233	5×5	DC×27 14#	2	5	5	5×5	0.8-4.2	0.7-2	5	7000	525*360*510	33/41
C6-5-03/333	3×4	DC×27 14#	2	5	3	3×4	0.8-4.2	0.7-2	5	7000	525*360*510	33/41
C6-5-A04/435	Extreme heavy	DC×27 19#	2	5	5	5×6	0.8-5	0.7-2	7	7000	525*360*510	33/41
C6-5-M04/435	Denim fabric	DC×27 19#	2	5	5	5×6	0.8-5	0.7-2	7	7000	525*360*510	33/41
C6-6-03/333	Plain seam	DC×27 11#	3	6	3×2	3×2×4	0.8-4.2	0.7-2	5	7000	525*360*510	33/41
C6-6-M04/435	Denim fabric	DC×27 19#	3	6	5×2.5	5×2.5×3.5	0.8-5	0.7-2	7	7000	525*360*510	33/41

**Note:** H/M: Widely thickness adaptability, Optional X(Suction pipe cutter). Optional SD(Front and rear air suction device), Machine volume: 525×360×510(mm), Total Weight33/41(kg).