

JACK

China No.1



Top & Bottom feeding computerized lockstitch machine for heavy duty (Stepping type)
Accurate needle stitch, Strong feeding



H6

H6

Item: Top & Bottom feeding computerized lockstitch machine for heavy duty(Stepping type)
 Feature: Accurate needle stitch, Strong feeding

Suitable for sewing products such as seat cushions, bags, swivel chairs, slippers, home textiles, hats, etc.
 Suitable for sewing: leather, canvas, denim, non-woven fabrics, etc.



Bag



Seat cushion



Swivel chair

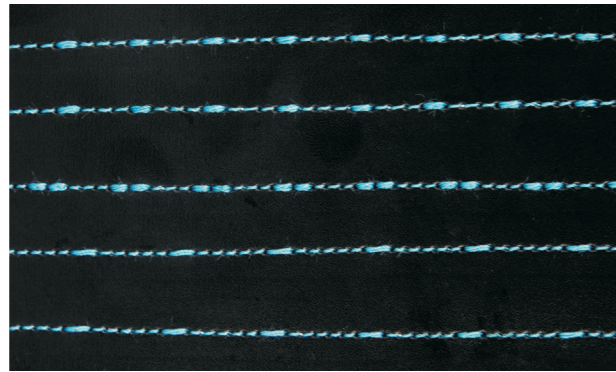


Glove



1 Accurate needle stitch, stable and reliable

Using the stepping motor to control the stitch length, and accurate to 0.1mm, according to different process requirements, it can also achieve 10 mm large needle length.



2 Variable stitches, fashionable and beautiful

Different sewing stitch is available based on different requirements, and editable pattern enables more fashionable and beautiful stitches.



3 Silent reverse sewing, quiet and comfortable

Stepping motor controlled reverse sewing structure by scientific design achieves silent reverse sewing, which enables a quiet and comfortable environment.



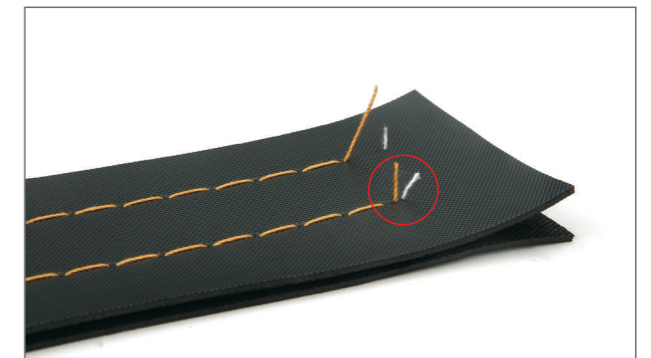
4 Strong feeding, stable and efficient

Top and bottom synchronous feeding, 750w power motor, super strong feeding ability, while sewing 8 layers of leather also achieve beautiful stitches.



5 Second stitch length, one key to switch

Users also can quickly switch to the second stitch length according to their needs, and realize half stitch length with one key.



6 Condense stitch lock, short thread remaining

It can also realize the function of condense stitch lock to ensure short thread remaining and it is not come loose.



7 Voice navigation, easy to use

When the machine fails, you can press the voice navigation button to broadcast professional solutions. Realize smart warranty and convenient maintenance.



8 No heavy, free your knee (optional)

The knee force of an ordinary or three automatic machine is about 50N, which is very heavy and harm for knee. Electric or pneumatic auto presser foot lifter can be selected.

Specification

Model	Application	Needle	Thread no.	Needle Length (mm)	Presser Foot Lifter Height (mm)	Max Speed (s.p.m)	Auto Presser Foot Lifter	Volume (mm)	Weight (kg)
H6-CZ-3	Normal material	DPX17 20-23#	2	10	7.5-16	2200	/	725×280×558	41/48.5
H6-CZA-3	Light material	DPX17 18#	2	10	7.5-16	2200	/	725×280×558	41/48.5
H6-CZST-3	Glove	DPX17 14#	2	10	7.5-16	2200	/	725×280×558	41/48.5
H6-CZXB-3	Bag	DPX17 20-23#	2	10	7.5-16	2200	/	725×280×558	41/48.5
H6-CZZD-3	Cushion	DPX17 20-23#	2	10	7.5-16	2200	/	725×280×558	41/48.5
H6-CZ-4	Normal material	DPX17 20-23#	2	10	7.5-16	2200	electric	725×345×580	43/51
H6-CZA-4	Light material	DPX17 18#	2	10	7.5-16	2200	electric	725×345×580	43/51
H6-CZP-4	Normal material	DPX17 20-23#	2	10	7.5-16	2200	pneumatic	725×345×580	43/51
H6 ⁺ -CZ-3	Normal material, IoT	DPX17 20-23#	2	10	7.5-16	2200	/	725×280×558	41/48.5
H6 ⁺ -CZ-4	Normal material, IoT	DPX17 20-23#	2	10	7.5-16	2200	electric	725×345×580	43/51